

COVID-19 SURVEY PHASE 2



We surveyed over 1,000 participants throughout T&T to find out how COVID-19 has affected their lives, and how their impact has shifted from March to May 2020



9% less participants have been financially impacted.



10% more participants have mental health concerns.



5% Tobago

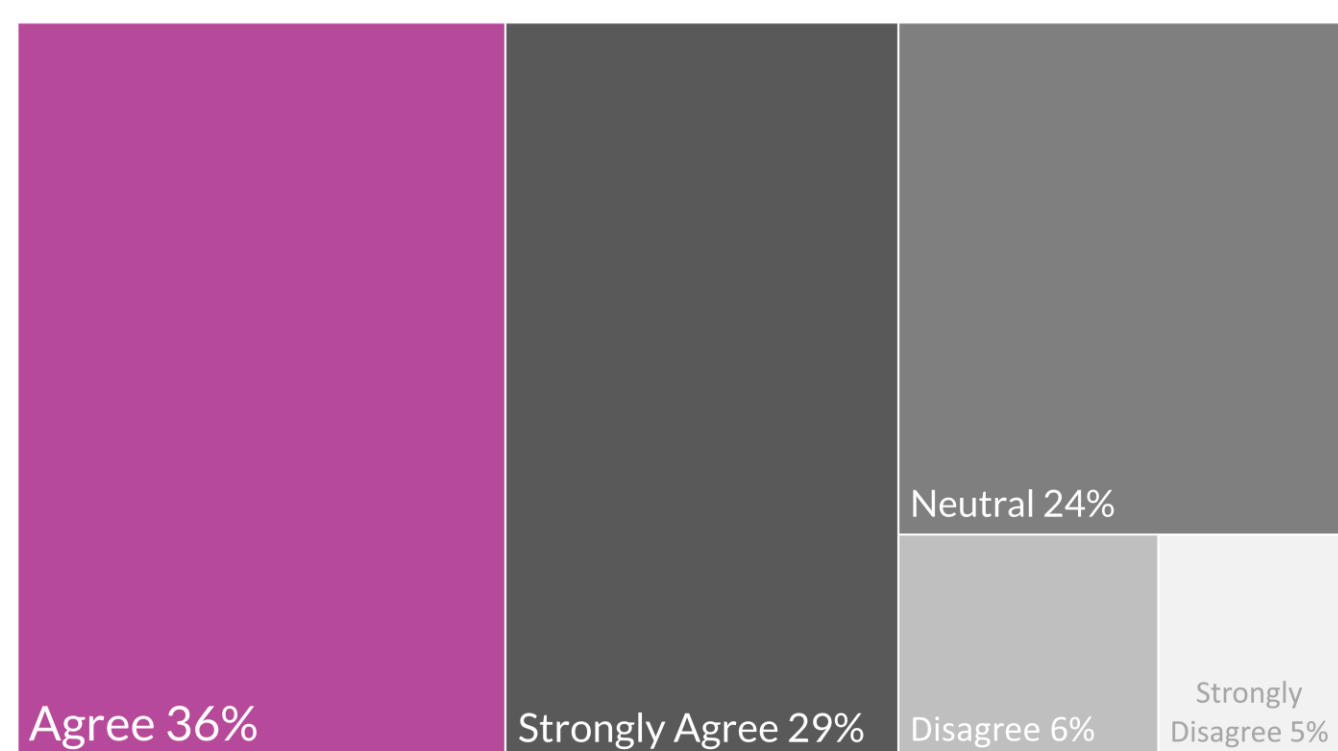
43% East-West Corridor

16% Central & Environs

29% South 6% Other

GOVERNMENT PERFORMANCE

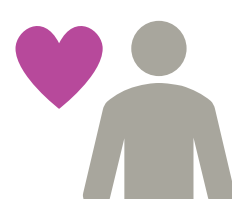
SATISFACTION WITH REOPENING PLAN



"THE TT GOVERNMENT RESPONSE TO COVID19 HAS BEEN WELL THOUGHT OUT AND EXECUTED."

BUYING BEHAVIOUR

11% Shopping more online



16% Support companies who put people over profit

18% Buy local and support small business



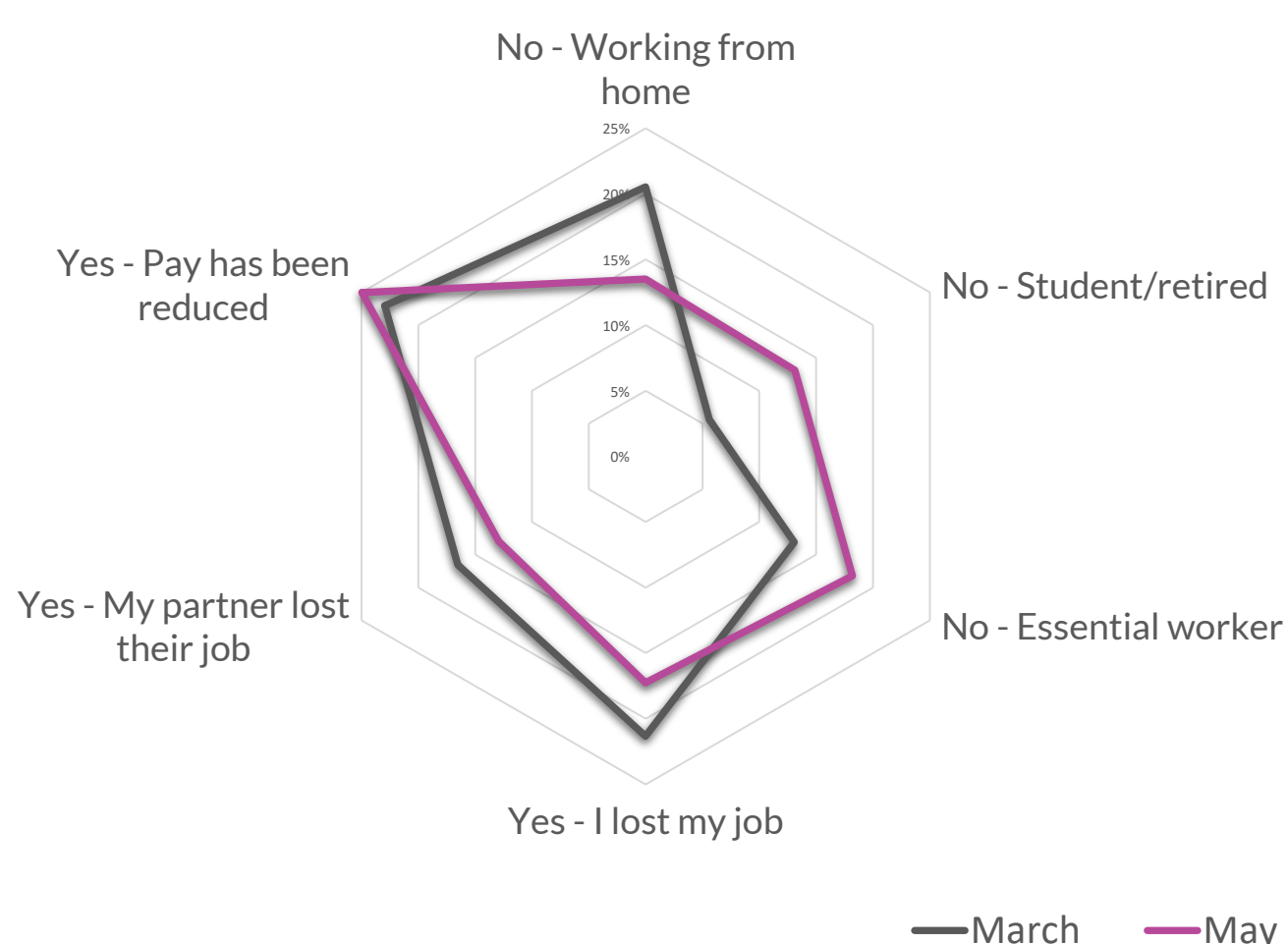
25% Expect protection and distancing measures

30% More cautious with spending



IMPACT

FINANCIAL



SOCIETAL

PRIMARY CONCERNS (MAY vs MARCH 2020)

- 30% (↓3%) health & safety of their loved ones;
- 25% (↑3%) economic impact in T&T;
- 19% (↑1%) ability to provide for my families;
- **11% (↑10%) MENTAL HEALTH**



25% know someone that was infected with COVID19.

5% of participants know someone who died as a result of COVID19.